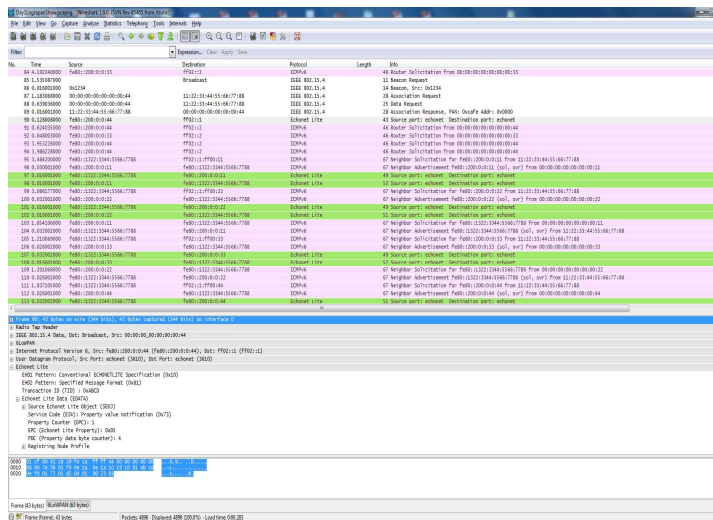


General Description:

ProShark is a protocol analyzer for IEEE 802.15.4 e/g, which supports full decode of Wi-SUN Alliance Field and Home Area Network (FAN and HAN) specific packets. Proshark comprises hardware and software to capture and decode IEEE802.15.4g packets. The hardware provided is a USB dongle which can be easily plugged into any PC. The PC based GUI software extends Wireshark to automatically detect the connected dongle and decode the captured packets, the packets are displayed in the GUI after parsing.



Related Products:

Pro-FAN1x: Procubed Wi-SUN Field Area Networking Stack. It is hardware agnostic and easily portable.

Pro-ETB: An Embedded test bench, which is easy to configure to do any kind of embedded device testing over Serial, USB, Ethernet Interface. Configurable to perform all different Wi-SUN profile Certification validation.

Procubed IEEE 802.15.4 e/g to Serial Application: A Serial based AT command Application running/hosted on top of MAC –PHY layer, providing an easier way of accessing IEEE 802.15.4 e/g based network.

Features:

- Wireshark is used as a GUI to display the parsed packet.
- All standard protocols of Wireshark are supported.
- Supports the parsing of all IEEE 802.15.4 e/g, 6LoWPAN, ECHONET LITE, Wi-SUN FAN, and Wi-SUN HAN in addition to all other standard protocol frames.
- Messages logging to Micro second precision.
- User configurable: PHY bands, PHY modes, Channels selection.
- Real time switching of Channel / PHY Mode.
- Save, open and print the capture logs.
- Sorting functionality for each of the labelled fields.
- Providing colour coding based on the packets.
- Flexibility to start and stop the capture of packets anytime.
- Multi-channel supported to capture more than one channel at a time and packets from all channels displayed in same GUI.
- Refresh button to clear the GUI windows and start new capturing.
- Parsing of Secured packets.
- Advanced packet filtering options.
- Frame information including time stamp, channel and link quality indication.
- User can choose to select or deselect the particular protocol parser to be applied.

System Benefits:

- Real Time Packet Sniffing.
- Graphical Protocol Analyser.
- Essential Tool for Application Developers.
- Can be used to demonstrate the compliance.
- Raw binary message Viewer.

ProCubed Inc. (www.procubedinc.com)

Procubed is the leader in wireless communication technology, providing a one stop solution for complete system level designs and end-to-end solutions. Procubed firmly believe in partnership models to enable our customers to lead in their respective fields. We enable our customers to enter their target IoT markets through innovative ideas and complete solutions. We assist in executing the right corporate decisions to justify return on investment and time to market. info@procubedinc.com